

NEWS CORNER

The latest news and information about Mulberry Wood Wharf Primary.



8th November 2024

Sarah Jane's reflection on the week...

We are delighted to share that our school hall now has a brand new digital screen and sound system! This fantastic addition will help us enhance our school shows, assemblies, and events, providing a more engaging experience for everyone. It will also be a valuable resource for parent workshops and other community gatherings. We're excited about the possibilities this new setup will bring to our school community!

It's been wonderful to see the children enjoying warm, nutritious lunches together. Lunchtimes have become a cosy, social part of the day, where children can gather, share stories, and enjoy a well-balanced meal. Metin's delicious food is helping to fuel their learning and play, keeping them energised throughout the day.

We are pleased to let you know that the booking system for our upcoming Parents Evening is now open. This is a valuable opportunity for you to meet with your child's class teacher for a dedicated 10-minute slot to discuss your child's progress, achievements, and any areas for support. During Parents Evening, you'll have the chance to:

- Review your child's learning and development so far this term
- Talk through their strengths and areas for improvement

- Ask any questions you may have and receive guidance on how best to support your child at home

Please log into the booking system on Ping at your earliest convenience to reserve your preferred time slot.

I have spent time listening to children read this week and I have looked through their writing books. We place a strong emphasis on reading and writing because these skills are fundamental to our children's overall learning journey. Reading fluency enables pupils to access and engage with the broader curriculum, while strong writing skills empower them to express themselves with clarity and confidence. This focus is in line with the guidance from the national *Reading Framework*, which highlights the critical role of early literacy in building a foundation for lifelong learning. I am thrilled to see the progress our young learners are making and are excited to continue supporting their development.

It was wonderful to see the children dressed in traditional clothing and bright colors to celebrate Diwali! The school was filled with vibrant outfits, joyful smiles, and a warm sense of community as we came together to mark this special occasion.

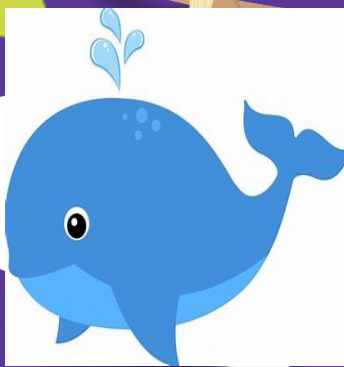
Tiger and Blue Whale Class learning this week...

The children had a wonderful start to the half term by visiting Mudchute farm. They got to explore the animals around the farm learning artifacts about their habitats and way of life. It was heartwarming to see the bravery from the children when feeding and petting the animals. Everyone in blue whale class showed courage, even when they felt anxious. There was a huge sense of community as everyone was supportive towards each other, cheering each other on.

The children also ended the week with a Diwali party which had endless dance parties, games, and a catwalk to show off everyone's outfits. We love to celebrate different cultural events here at MWW.



Tiger class had an amazing week! We talked about Diwali, who celebrates Diwali and how and made Diwali cards, role play the story of Rama and Sita. Of course we had our trip to Mudchute farm this week. Tiger class loved feeding the cows, the sheep and the lamas.



STARS OF THE WEEK
FOR DEMONSTRATING:

CREATIVITY

Blue Whale Class Superstars:

Llya- for her sense of creativity when building houses with blocks in the construction area.

Adam- for his focus and determination to finish a puzzle.

Tiger Class Superstars:

Ziyana: amazing creative thinking in our home corner

Malik: came up with lots of creative ideas through the week about how to show different ways of great choice making.

Elephant Class have been learning...

This week, the children in Elephant Class have enthusiastically embraced our new topics for this half term.

In English, we have been reading a variety of formal invitations to prepare for writing our own invitations for the Mulberry Arts Festival next week. We've learned that invitations should have a title, be addressed to and from someone, include the venue, date, and time, and, most importantly, contain key information to persuade people to attend.

In Geography, the children explored the local area, spotting the human features they could see. We understand that human features are things made by humans, while physical features are natural elements in the world. Nikita shared, "I think the garden is both a human and physical feature because the bench is made by a human, but the grass is natural." This discussion helped us understand that human-created features can sometimes contain natural elements, but if the entire feature is designed by humans, it's classified as a human feature.

In DT, we are exploring textiles. The children used wrapping paper to trace, cut, and create their own quilt designs. They will continue to develop these skills next week. Finally, we celebrated Diwali by wearing colourful clothes and making card Diya's. Have a great weekend!



STARS OF THE WEEK FOR DEMONSTRATING:

CREATIVITY

ELEPHANT CLASS

Elijah

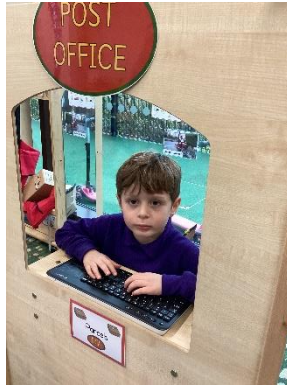
For choosing respect by showing kindness to a new adult and collaborating well with your table partner in English.

Inaaya
a

For respectfully sharing her historical understanding by thoughtfully designing and building houses and delicious bread inspired by the Great Fire of London.



Panda Class have been learning...



Welcome back everyone, what a great first week Panda Class have had. They have loved our new role play area of the Post Office. Children have been wrapping parcels, writing messages, using envelopes and stamps. Their imaginative play has encouraged lots of creative talk and expressive language. If you have any envelopes from your post at home that we can reuse, feel free to send them into class.

In English, pupils have learnt what an imperative verb is and how it can be used in our instructional writing. Pupils have heard, followed, and applied instructions to achieve an outcome. Playing a game at home of simple instruction is a good way to consolidate our learning.

We have been learning about the Part, Whole Model in maths to start our unit on Addition and Subtraction. We have used lots of concrete resources on part whole models to orally recall simple addition facts.

We ended our week by celebrating Diwali and having fun creating rangoli patterns to decorate our classroom.



STARS OF THE WEEK FOR DEMONSTRATING: CREATIVITY

PANDA CLASS

Liam: For applying his learning to build a tall structure with a strong base.

Dylan: For thinking of ways to improve his creations to make it better.

LION CLASS

Ashvik- showing respect by listening to other ideas and sharing his own.

Stella- showing respect by taking care of classroom resources.

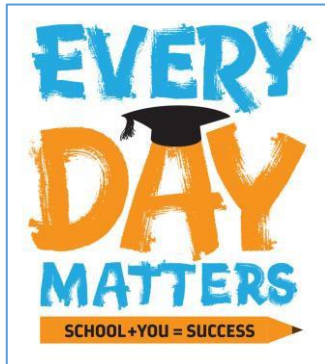
Lion Class have been learning...

Welcome back to another fun packed term, already filled with great learning!

This week in Science, Lion class have been learning about materials. We touched and felt different materials such as plastic, wood, metal, fabric, cardboard and paper. Lion class then named different objects in the classroom and identified the materials they were made from. We noticed that some objects were made of more than one material like a table. Allegra said the "scissors are made of metal and plastic".

In Design Technology (DT) Lion class have been learning about structures. We looked particularly at the Leaning Tower of Pisa and learnt about what makes a stable tower. Lion class built towers out of different materials such as wooden blocks and foam bricks. We learnt that wider bases and blocks built directly on top of each other made stable towers. Next week we will learn different types of joins with cardboard so that we can make our own towers the week after! Thank you for the empty boxes that have been given to support us with this learning, please continue to send in any more you may have at home.





Mulberry Wood Wharf attendance 2024-25

Going for Gold together!

Well done families, it is wonderful to see you all arriving on time.

This week:

GOLD Attendance goes to:

SILVER Attendance goes to:
Tiger (96 %)

BRONZE Attendance goes to:
Elephant Class (92%)
Panda (90%)

Keep trying:
Blue Whale (84%)
Lion (85%)

Our **GOLD Class Attendance** are our classes who have 97+ attendance for a whole week

Our **SILVER Class Attendance** are our classes who have 95-97% attendance for a whole week

Our **BRONZE Class Attendance** are our classes who have 90-95% attendance for a whole week.





Dates for your diary:

- 11-15th Nov: Antibullying week
- 11 Nov: Remembrance Day
- 12 Nov: Odd socks day
- 12 Nov: Nurse visit coffee morning 10-11am
- 12 Nov: Festival of Arts rehearsal offsite
- 13 Nov: Festival of Arts 2pm and 7pm at Mulberry UTC
- 15 Nov: MWW Annual Bake off
- 15 Nov: Children in Need – Wear yellow or spotty clothes
- 19-20 Nov: Parents' Evening
- 21 Nov: Professional photographs (for parents to purchase)
- 25 Nov: Flu Vaccination (2nd round)
- 1 Dec: Advent calendar starts on website
- 13 Dec: Reception Class Nativity
- 17 Dec: KS1 Christmas Shoe

Mulberry
Wood Wharf Primary

CALLING ALL BAKERS

Want to Be Part of Our Bake Off?

The Annual Mulberry Wood Wharf Bake Off raising money for Children in Need – FRIDAY 15TH NOVEMBER 2024

BAKE SALE AFTER SCHOOL - 15TH NOVEMBER 2024

JUDGING BY THE HEADTEACHER, SARAH JANE AT 2.30PM, FRIDAY 15TH NOVEMBER- FAMILIES WELCOME!



FamiliesMatter

Parent and Family Support Service



Strengthening Families, Strengthening Communities (SFSC)
Parenting Programme for Parents

Learn to develop strong, healthy relationships with your children and gain simple, practical strategies to manage children's behaviour in a positive way.

Venue:	Olga Children and Family Centre, 25 Medway Road, London E3 5DS.
Date:	Wednesdays 11 th , 18 th , 25 th November, and 2 nd & 9 th December 2024
Time:	Time: 10am - 12pm
How to refer:	Please contact 020 7364 6398 or email to parenting@towerhamlets.gov.uk to book your place.
During the course you will:	<ul style="list-style-type: none"> • The process of discipline for positive parenting • Enhancing parent-child relationships • The benefits of praise • Managing conflict situations
It is advised that parents attend all sessions to get the most benefit from the course.	



Jigsaw
The mindful approach to PSHE

Our school is an anti-bullying school

CHOOSE RESPECT

#ANTIBULLYINGWEEK

hitch

Family Hubs
TOWER HAMLETS

Parents. Grandparents. Your experience is valuable!

Hitch Marketing are working in partnership with Tower Hamlets Council and Family Hubs to understand the baby feeding experiences of parents and grandparents in the Tower Hamlets.

Take the 10-minute survey to share your views and be in with the chance of winning a £50 voucher.

[CLICK HERE](#)