

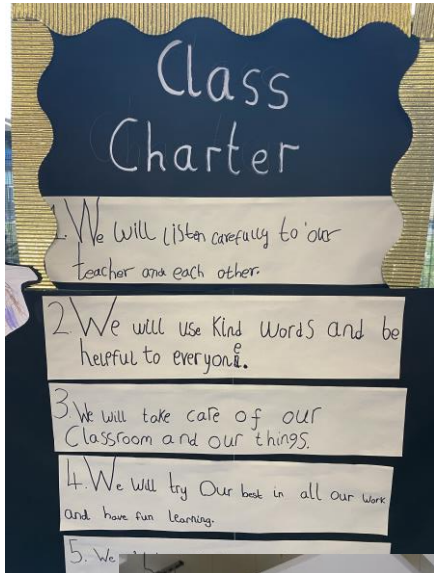
Mulberry

Wood Wharf Primary

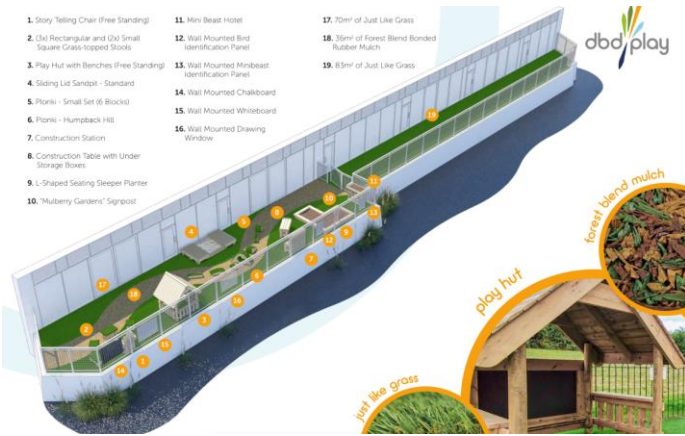
Welcome to the Mulberry Wood Wharf Primary Open Days 2024



Housekeeping and programme of the Open event

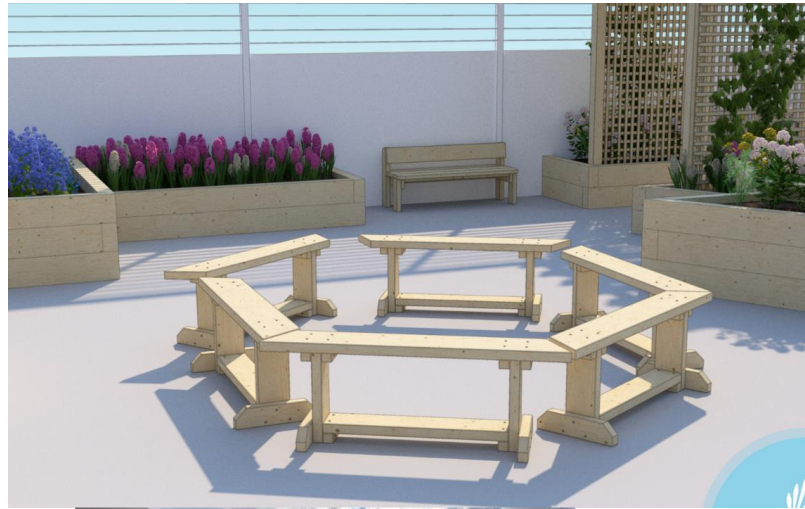


The new site and facilities



3 outdoors spaces

Daily sole access to the sports hall underneath the school



Item 2 – Outside Classroom WO19
Wall graphic – Schools Values
3277mm x 935mm



Unit Cost	Total Cost
£420	£420



Our Values



Vision

Mulberry Wood Wharf Primary is committed to striving for excellence in all that we do. Our vision is that pupils become creative and ambitious learners who strive to do their best at all times because they are motivated and guided by outstanding teams within the school. They will be able to contribute to their local community and understand how their actions impact upon the wider world. They will be caring citizens who know how to keep themselves safe and who realise that they have a role to play in looking after others. As we develop our teaching and our curriculum, we are aiming for outstanding in all that we do.

Outstanding Achievement For All

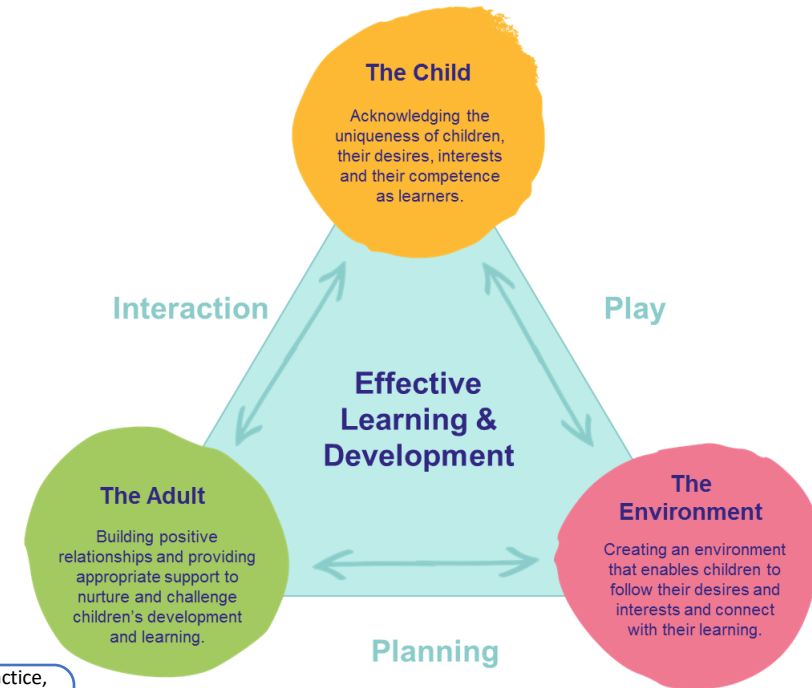
Our Characteristics of effective learning

 Investigation	 designer	 think	 risk	 problem	 explorer
We are investigators!	We are designers!	We are critical thinkers!	We are risk takers!	We are problem solvers!	We are explorers!

Mulberry Wood Wharf Curriculum Intent

A creative curriculum based on an accumulative knowledge approach: Foundations of the curriculum at Mulberry Wood Wharf

- Raising achievement for all through the application of knowledge across the curriculum
- A personalised approach
- Raising and maintaining standards in the core subjects while delivering a motivating foundation curriculum, with independent and child-led learning
- Thematic approach with a core question to help children make connections and develop opinions
- Our core values underpin the school's ethos and curriculum
- Children are active participants in their learning
- Outcomes are individual and meaningful to the child



Driver 1

- We are driven by our moral purpose, vision and values and we have a clear strategic direction so that time and resources are used effectively and have the best impact.

Driver 2

- We take pride in being an inclusive school that takes diversity, equality and equity seriously. We make sure we get it right for all children including SEND and preparing them for a changing and increasingly complex world

Driver 3

- We provide high quality teaching and interactions with pupils. We carefully assess them and we know that good progress is when children know more and they feel good about their learning and themselves.

Driver 4

- We draw on old and new research which informs our practice, we are particularly interested in theories about how child development and how the brain works through the primary years and how children learn (pedagogy and characteristics of learning)

Driver 5

- The unique child - We know that happy brains means lots of learning and we take the time to find out about children and their needs. We focus on pupils' wellbeing and involvement throughout the primary years (Leuven scales)

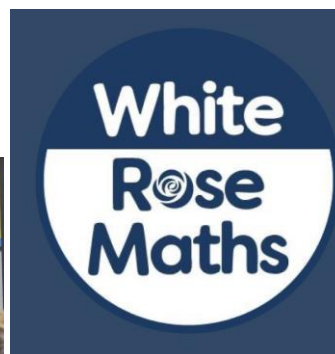
Driver 6

- We aim to provide our pupils with a mini world where they can learn, make mistakes and learn some more so that they are prepared and feel confident for the future

The curriculum is ambitious, broad and balanced, tailored to the needs of Mulberry Wood Wharf Primary's community. It is consistent with the fully inclusive, aspirational vision of the Mulberry Schools Trust and focused on **outstanding achievement for all**. Mulberry Wood Wharf Primary will be an educational environment in which all pupils will become accomplished and confident with the skills and aspirations to move to each phase of their education from early years to primary, on to secondary and into higher education, training or employment at age 19.

Our curriculum

- Wellbeing and involvement
- Readiness to learn (age in months and brain development)
- CULTURE
- Inclusive, motivating and exciting curriculum (entitlement, continuous provision and child initiated learning)
- Continuous provision from Reception through to Year 6
- Phonics and early reading (give me 10, core book challenge, book swap) making stories come to life!
- Cusp curriculum - CUSP is guided by evidence-led curriculum structures, such as retrieval, spaced retrieval practice and interleaving. It is underpinned by explicit vocabulary instruction and research-focused pedagogy. Combining these has led to exceptional outcomes for pupils, as a result of coherent curriculum design and instructional teaching. It also gives you, as school leaders, consistency and expectations. CUSP is unapologetically ambitious – it will not only improve outcomes for pupils, but also teacher subject knowledge.
- Specialist tutors for music, Computing and sports





Inclusion at Mulberry Wood Wharf



Sarah Jane Bellerby
Executive Headteacher, EYFS Lead



Lindsay Carbonneau
Assistant Headteacher, SENCo



Enrichment at Mulberry Wood Wharf

- At least 1 trip per half term
- Real life experiences
- Private music tutoring
- Lunch time and after school clubs
- Taking part in the festival of arts
- Weekly cooking in Early Years
- Chicks/butterflies



Wraparound care at Mulberry Wood Wharf

You are here: [Home](#) / [Extracurricular Clubs and Wraparound Care](#)

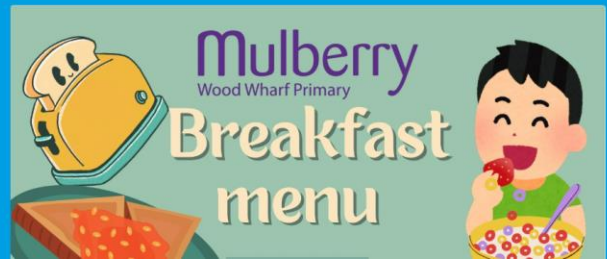
EXTRACURRICULAR CLUBS AND WRAPAROUND CARE

Extracurricular Clubs 2024/2025

School extracurricular autumn 1 clubs will be published soon. The clubs will start w/c Monday 16th September and will run from 3:30-4:30pm for all clubs.

To book the school clubs email club@mulberrywoodwharf.org

Our previous offer can be found [here](#).



Breakfast club

Time: 8:00am-8:50am

Cost: Free*

Provider: This service is provided by the school

**The school will fund breakfast clubs for the first two terms as we settle into the new building. This arrangement will be reviewed in spring 2025.*

After school club

Time: 3:30pm-5:30pm

Cost: £13

Provider: This service is provided by Premier Education.



Wraparound Care for Mulberry Wood Wharf Primary

After school care every day the school is open to children!!!

Care to start in September 2024!

“
The coaches are knowledgeable, respectful and they have a full understanding of the school's ethos.
Riverside Primary



Academic Year 2024-25



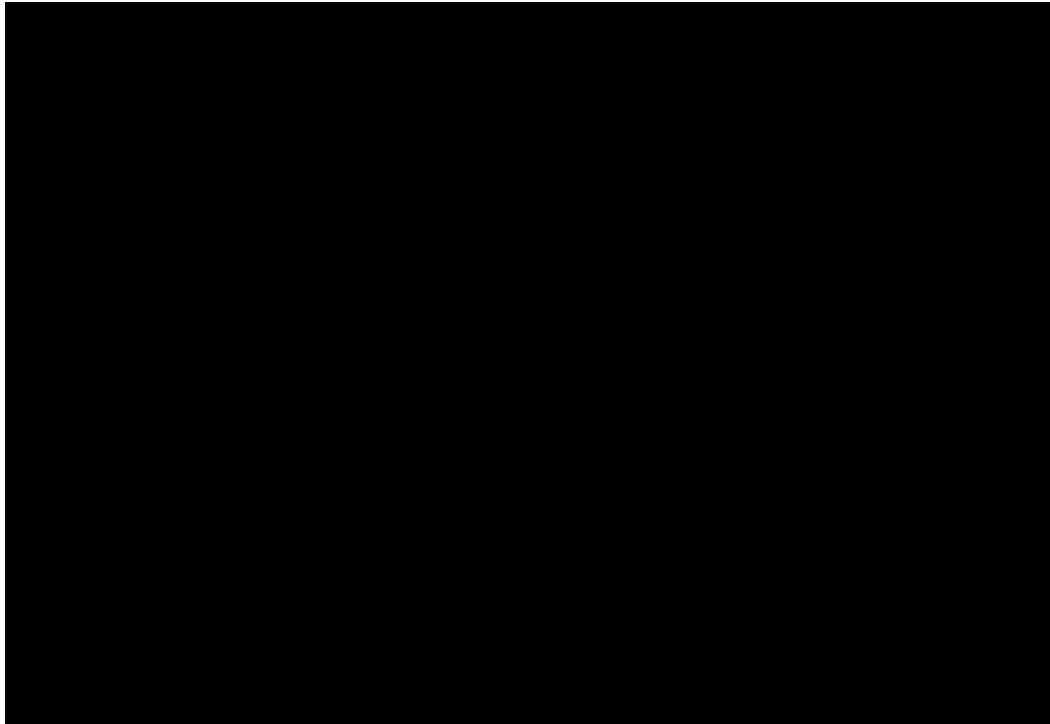
SCAN HERE FOR
MORE INFORMATION

or visit [Mulberry Wood Wharf Primary Booking](#)

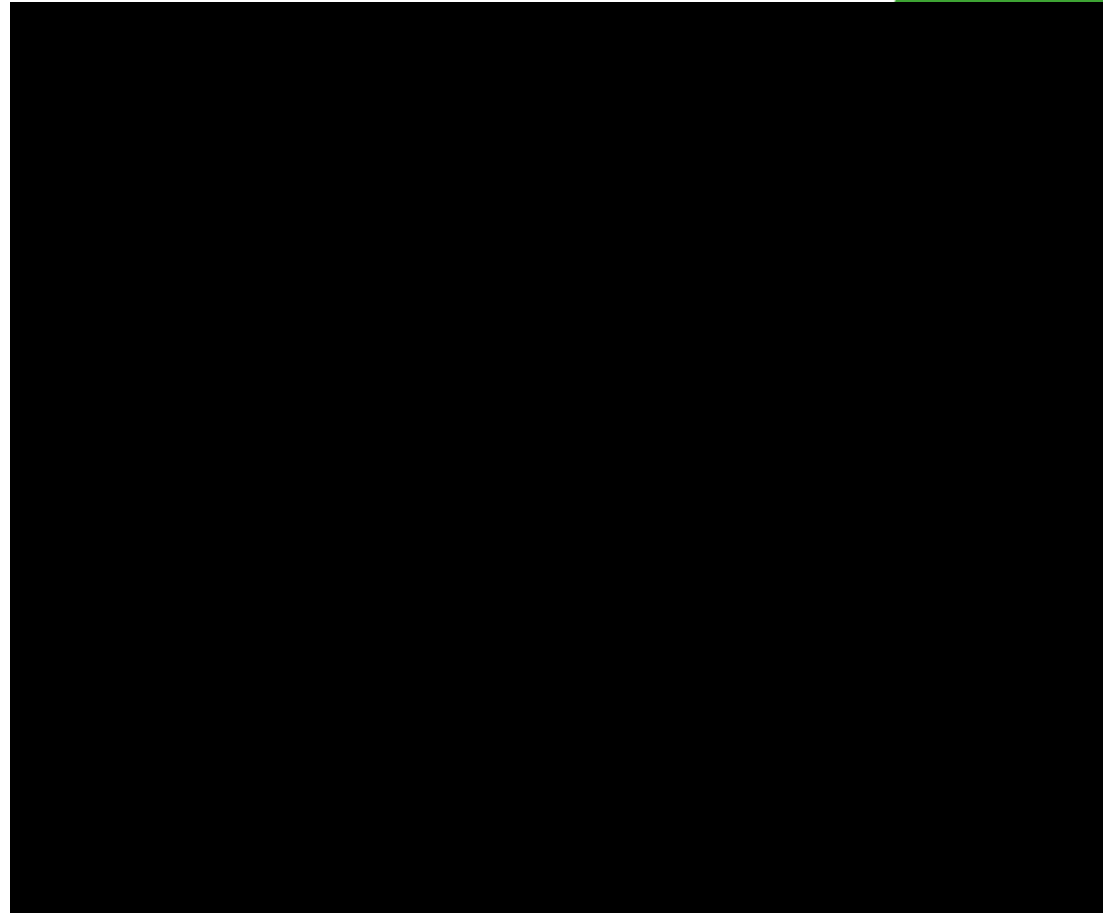
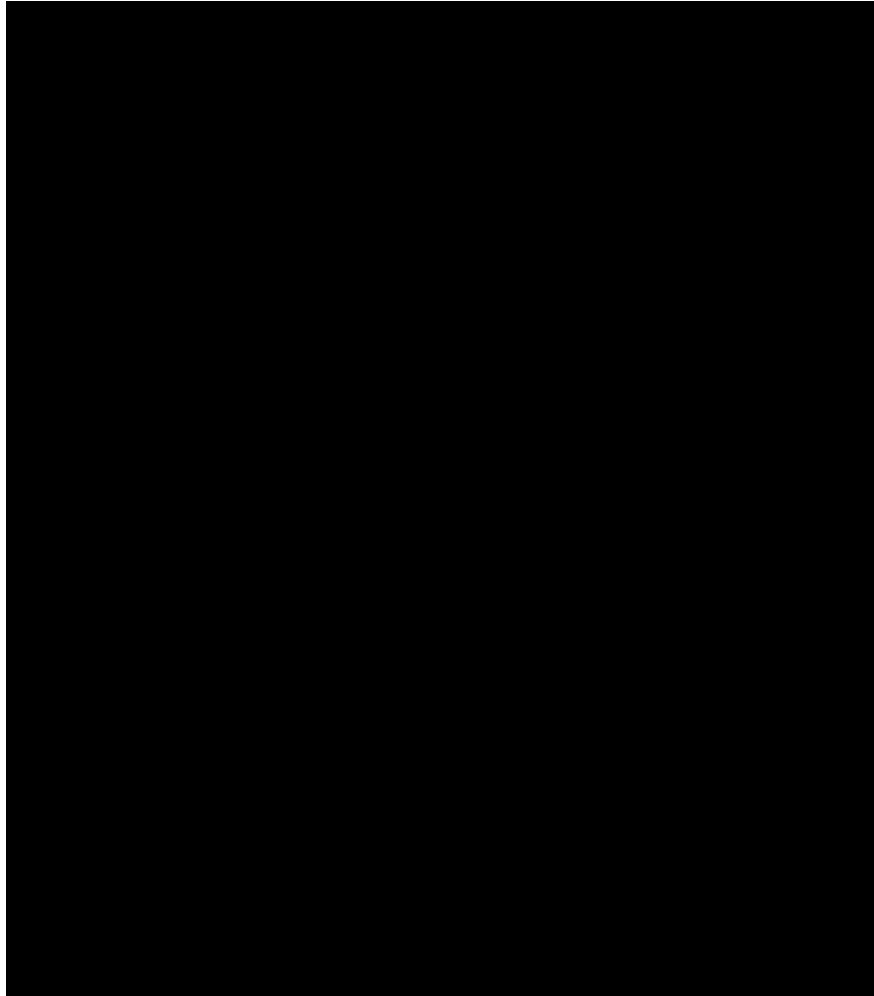


Based on over 15,000 reviews

Mealtimes at Mulberry Wood Wharf



What our pupils think...



Community

- Whole school events throughout the year
- Parental engagement and parent voice
- Pupil voice and pupil parliament – links locally and globally



Key priorities at Mulberry Wood Wharf for 2024-25

1. Implementation of Y2 Curriculum
2. Evaluation of the impact of the KS1 Curriculum
3. Gaining the silver award to become a rights respecting school
4. Gaining the silver award to become a healthy school
5. Consulting with key stakeholders on the Modern Foreign Language
6. Consulting with key stakeholders on the RSE curriculum
7. Utilising the facilities in the new site to have maximum impact on the curriculum and core and universal offer to all pupils

Our measures...

- Good level of Development (GLD) in Reception
- Reception Baseline assessment DFE
- Phonics screening in Year One
- KS1 Sats Y2 (Optional)
- Multiplication screening Y4
- KS2 Sats Y6



Mulberry Wood Wharf Primary

20 Brannan St, London

[Write a review](#)

5.0 ★★★★★ 2 reviews

Reviews aren't verified. ⓘ



Bogdan O

Local Guide · 16 reviews · 1 photo

★★★★★ 2 weeks ago **NEW**

Really pleased with this school so far. It is demonstrating an unwavering focus and commitment to outstanding achievement for all, underpinned by its six comprehensive values: Resilience, Respect, Kindness, Active, Community and Creativity.

It's a truly collaborative effort from staff, students, parents and the reputable Mulberry Trust in charge.

Lovely new facilities as well, on a private estate, and open to all.

Let's keep up the great work.

Mulberry
Wood Wharf Primary

How to apply, oversubscription criteria and catchment areas

15 January 2025

This is the closing date for applications. Make sure you apply online by this date. Apply at www.eadmissions.org.uk.

School catchment area 4 (Isle of Dogs)



Schools in the catchment area

Community schools

- 1 Arnhem Wharf
- 15 Cubitt Town
- 23 Harbinger
- 42 Seven Mills

Voluntary primary schools

- 47 St Edmund's RC
- 50 St Luke's CE

Academy/Free schools

- 9 Canary Wharf College East Ferry
- 10 Canary Wharf College Glenworth
- 36 Mulberry Wood Wharf (uses same admissions policy as community schools)

Area covered

- South of Blackwall Basin including Wood Wharf
- North of River Thames

To find out the catchment area for your home address, please view the maps or visit the website: www.towerhamlets.gov.uk/equalchance

1 Oversubscription criteria and tie-break

Oversubscription criteria for Tower Hamlets community schools and nurseries

If a community school receives more applications than places available it will not be possible to offer every child a place. Children with a Statement of Special Educational Needs or an Education, Health and Care Plan (EHCP), which names the school applied to, will be placed before all other applicants. See page 6 for more information on children with an EHCP.

The remaining places will be filled in the priority order below.

1. Children Looked After by the Local Authority, including adopted children who were previously looked after and children who leave care under a special guardianship or residence order. This also includes children who were previously in care abroad;
2. Children for whom it is deemed there is strong medical or social reason to attend the school applied to (See Note 1);
3. Children living within the catchment area of the school who have a sibling attending the school (including the school of a separate infants and junior school) and who will continue to do so on the date of admission (See Note 2);
4. Children whose parent is a member of staff who has been employed at the school concerned for two or more years at the time of application and/or children of a member of staff who has been recruited to fill a vacancy for which there is a demonstrable skill shortage (See Note 3);

5. Children who live within the catchment area of the school and for whom the school applied for is their nearest community school within the catchment area;
6. Other children from within the catchment area of the school;
7. Children living outside of the catchment area with a sibling at the school;
8. Children living outside of the catchment area of the school.

Tie-break

In the event of oversubscription within categories 3, 4, 5, 6, 7 and 8 (see above), priority will be given to children who live closest to the school by the shortest walking distance. In the event of two distances being the same, a decision will be made by random allocation.

A digital Ordnance Survey map is used to measure the distance from the home address to the school's designated official entrance. The distance is measured from the centre point of the address to the centre point of the main entrance of the school, measuring along the centre line of the shortest approved route. The system will take account of local footpaths and public walkways with regard to the safety of the route. It does not take account of the location of pedestrian crossing points.

Distances measured by other means i.e. private car, pedometer or internet websites are likely to result in different calculations as they may use different parameters for the address locations and the underlying network which is used to calculate the distance, and therefore should not be relied upon as

evidence that the Local Authority's distance calculation is incorrect. The Local Authority's measurement system is designed to be reliable and consistent.

NOTES

Note 1: This can include the parents', carers' or other family members' medical conditions and the family's social needs. Parents must complete the relevant section on the application form and attach medical and/or social reports from a suitable professional (e.g. a doctor or social worker) to support the application, explaining why the particular school is most suitable with regards to the family circumstance.

Note 2: Includes the sibling of a child who does not live within the school's catchment area, but who was admitted on or before 31 August 2024. For this purpose, sibling means a whole, half or step-sibling resident at the same address.

Note 3: Priority will be limited to one place for each form of entry in any year*, with an additional maximum limit of no more than:

- Four children throughout the whole school (for single and one-and-a-half form entry schools)
- Eight children throughout the whole school (for two form entry schools)
- Twelve children throughout the whole school (for three form entry schools, and upwards)

Planned admission number	Max per year group	Max per school
30 to 45 pupils	1	4
60 pupils	2	8
90 pupils	3	12

*An exception to the above will apply to children of multiple birth or those born in the same academic year.

Admission to Reception (primary school) 2025

Please read the [Starting Primary School in Tower Hamlets booklet](#) for useful information on the admission process.

Pupils usually start primary school in the September following their fourth birthday. If your child was born between 1 September 2020 and 31 August 2021 this will be from September 2025.

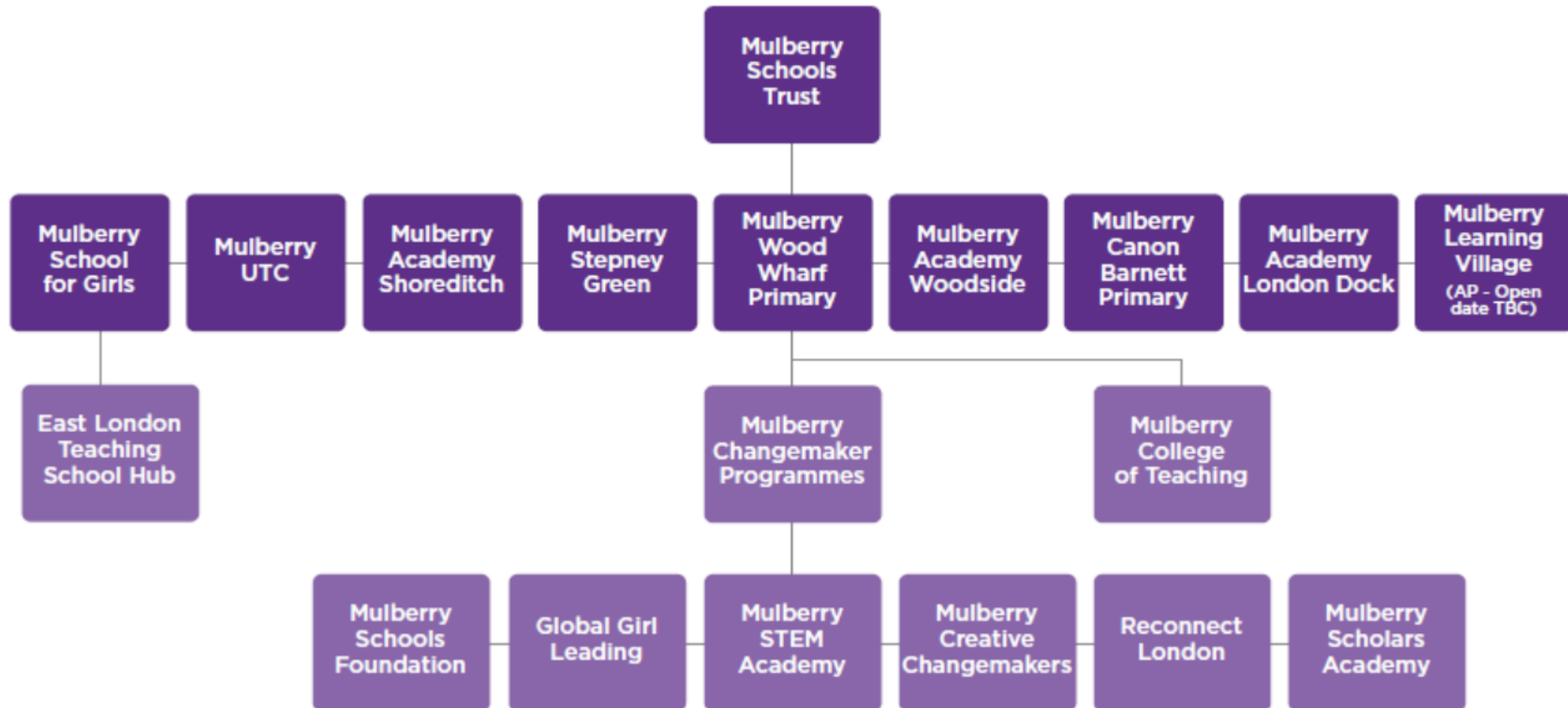
You must complete an online application by 15 January 2025 through the [E-admissions website](#).

You must make an online application for a reception place, even if your child is already attending the school's nursery.

[Find out more about primary school \(reception\) admission](#)

Mulberry
Wood Wharf Primary

The Mulberry Family of Schools



Enriched Experiences & Extending the Vision of What's Possible

- . Students are proud of who they are and express their identity through various platforms such as:
 - The arts & sciences
 - Partnerships with employers
 - Mulberry STEM Academy in Partnership with Mercedes Grand Prix Ltd
 - Platforms for expressing political voice
 - Leadership opportunities
 - Inspirational Societies linked to Russell Group Universities



Mulberry Students at The White House under the Obama Administration, 2015



Students on work experience at Mercedes Grand Prix Head Quarters, 2021



Mulberry Youth Conference at the National Theatre



Edinburgh Fringe Festival

Mulberry Wood Wharf Film

YouTube Video

<https://bit.ly/3uRSXSj>

Outstanding achievement for all...



@MulberryTH



www.mulberryschoolstrust.org

Mulberry
Wood Wharf Primary